

Eaves Gutter Design Flow

GUIDANCE DOCUMENT GD 18

June 2026



Eaves Gutter Design Flow

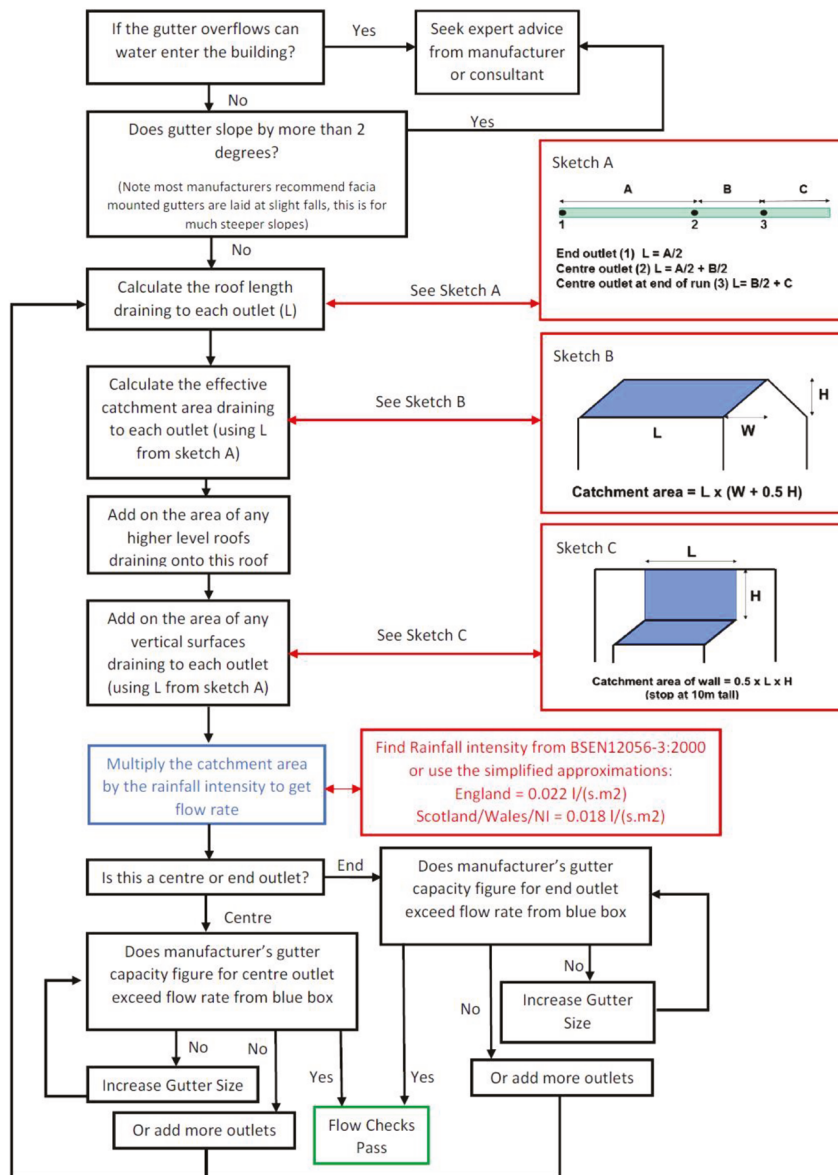
INTRODUCTION

The MGMA eaves gutter design flow chart overleaf is intended to enable the user to perform calculations to BS EN12056-3:2000. By entering simple information relating to building dimensions, geographical location and proposed gutter style, the flow chart will provide guidance on gutter specification. The flow chart is intended as a guide for straightforward eaves gutter applications.

To select the gutter size appropriate to your requirements, two factors must be taken into consideration, namely roof area and gutter flow capacity. Gutter flow capacity is dependent upon system type, outlet position and whether the gutter is laid level or to a specified fall. The flow chart is based on the recommendations from BS EN 12056-3:2000 Roof drainage, layout and calculation.

Further advice and guidance is available from any MGMA member company whose details can be found on the MGMA website at www.mgma.co.uk

MGMA Gutter Design Flow Chart



Note:

Guidance Document GD18 was first published in May 2017 and amended in August 2017

MGMA DISCLAIMER

Whilst the information contained in this bulletin is believed to be correct at the time of publication, the Metal Gutter Manufacturers Association Limited and its member companies cannot be held responsible for any errors or inaccuracies and, in particular, the specification for any application must be checked with the individual manufacturer concerned for a given installation.

Information provided by the MGMA or contained within publications and articles which are made available in any form (mechanical, electronic, photocopying or otherwise) cannot be used or cited as a means of ensuring that a material, product, system or assembly is compliant with Building Regulations.

©2026 MGMA

Metal Gutter Manufacturers Association Limited

Suite A
82 James Carter Road
Mildenhall
Suffolk
IP28 7DE
United Kingdom

E-mail: info@mgma.co.uk

Registered in England No: 06476148

Registered office: Suite A, 82 James Carter Road, Mildenhall,
Suffolk, IP28 7DE