

# Industrial Guttering

NEXT DISTRIBUTION CENTRE, DONCASTER



Insulated and single skin external gutters are installed in the majority of new build warehouse and manufacturing facilities, most of which are now membrane lined with welded joints to give a long lasting weatherproof solution for the buildings.

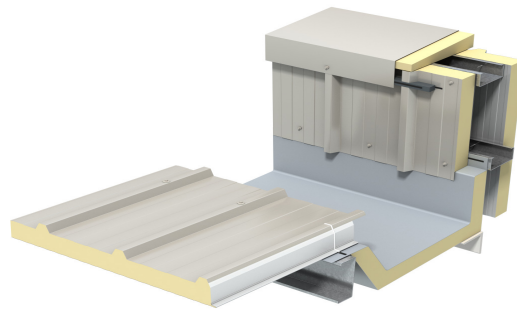
In this example membrane lined insulated gutter systems were used in the construction of a distribution centre for Next plc in Doncaster. The construction of this 60,000 square metre warehouse and office development provides first class office and warehouse facilities for clothing retailer Next Plc. The development comprises of a four storey office block and a conveyor link bridge to enable stock transportation between warehouses.

In order to achieve the swift installation time required by Next Plc, the project used two metre wide trapezoidal roof panels along with seven metre long membrane lined insulated gutters

to significantly increase the speed of construction. The roof system installation was completed ahead of build schedule.



The roof panels were then seamlessly integrated with the membrane lined insulated gutters which incorporate a closed-cell insulation core and tested to demonstrate Class B non-fragility to BS9101:2017.



*Trapezoidal roof insulated gutter*

[www.mgma.co.uk](http://www.mgma.co.uk)