



EAVES GUTTER DESIGN FLOW CHART

INTRODUCTION

The following MGMA eaves gutter design flow chart is intended to enable the user to perform calculations to BS EN12056-3:2000. By entering simple information relating to building dimensions, geographical location and proposed gutter style, the flow chart will provide guidance on gutter specification. The flow chart is intended as a guide for straightforward eaves gutter applications.

To select the gutter size appropriate to your requirements, two factors must be taken into consideration, namely roof area and gutter flow capacity. Gutter flow capacity is dependent upon system type, outlet position and whether the gutter is laid level or to a specified fall. The flow chart is based on the recommendations from BS EN 12056-3:2000 *Roof drainage, layout and calculation*.

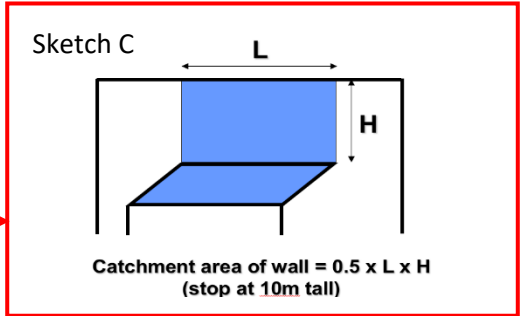
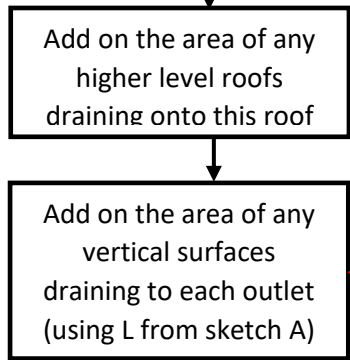
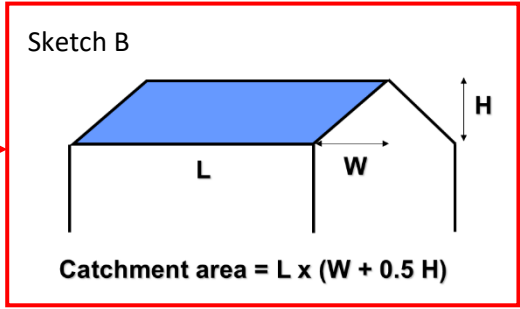
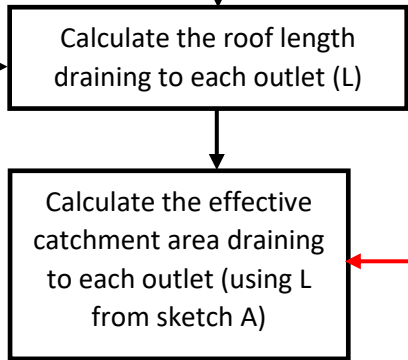
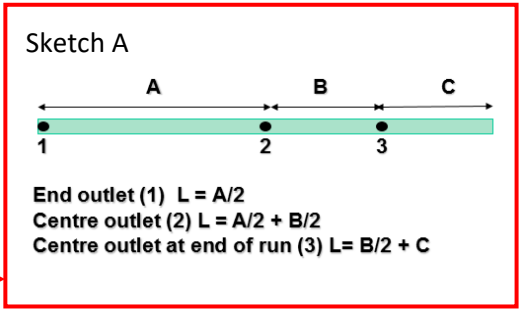
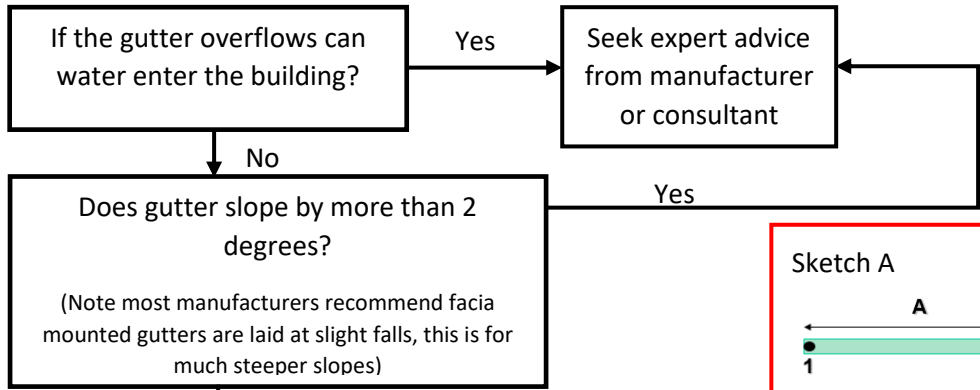
Further advice and guidance is available from any MGMA member company whose details can be found on the MGMA website at www.mgma.co.uk.

MGMA DISCLAIMER

Whilst the information contained in this bulletin is believed to be correct at the time of publication, the Metal Gutter Manufacturers Association Limited and its member companies cannot be held responsible for any errors or inaccuracies and, in particular, the specification for any application must be checked with the individual manufacturer concerned for a given installation.

All rights reserved. The material may not be reproduced or distributed, in whole or in part, without prior written permission of MGMA. However, reproduction and distribution, in whole or in part, by non-profit, research or educational institutions for their own use is permitted if proper credit is given, with full citation, and copyright is acknowledged. Any other reproduction or distribution, in whatever form and by whatever media, is expressly prohibited without the prior written consent of MGMA.

©2017 MGMA 106 Ruskin Avenue, Rogerstone, Newport, Gwent NP10 0BD
01633 891584 mgmagutters@gmail.com www.mgma.co.uk



Find Rainfall intensity from BSEN12056-3:2000 or use the simplified approximations:
 England = 0.022 l/(s.m²)
 Scotland/Wales/NI = 0.018 l/(s.m²)

