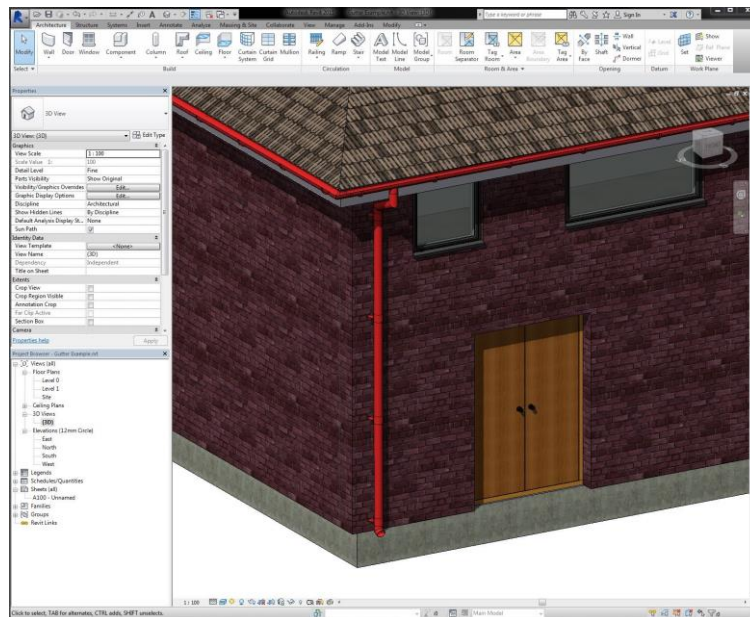




9TH OCTOBER 2017

## ALUMASC LAUNCHES BIM LEVEL 2 FOR 'ALL METAL' RAINWATER

AlumasC Rainwater, part of AlumasC Water Management Solutions (AWMS), is the first and only manufacturer to provide BIM Level 2 content (Building Information Modelling) for a complete range of metal rainwater – aluminium, cast iron and steel. This means specifiers, engineers and contractors can now access the files they need for metal rainwater from one BIM model.



*AlumasC Rainwater provides BIM Level 2 content for a complete range of metal rainwater*

The leading manufacturer of metal rainwater systems has developed its BIM files so specifiers and contractors can benefit from a new slimmer version too. This has been completed in response to feedback and requests from customers to receive smaller files.

BIM files from AlumasC Rainwater are modelled to achieve an accurate external space envelope and connection detail. But file sizes increase with model detail, so in the new slimmer model it has been stripped of non-essential details such as logos, small radii, internal strengthening ribs, fasteners & fixings. This means files can be accessed much more easily and quickly.

BIM is a process for creating and managing information on a construction project across the project lifecycle. Introduced by Government in 2011 initially for public sector projects, the benefits of BIM can be realised for the private sector too. The aim of BIM is to improve efficiencies, reduce risk, encourage better planning, and reduce operational costs. 3D models are developed based on information assembled by manufacturers, architects and specifiers and updated at key stages of a project.

BIM files for Alumasc Rainwater's all metal range can be downloaded from [www.alumascrainwater.com](http://www.alumascrainwater.com). For more information call 0808 100 2008.